

♩=152

[1-4] *mp* *ff*

11 *fp* *ff*

18 *p* 3

25 *ff* *fff* [29-32] *mf*

35 3 [37-39] 2 [41-42] *f* 3

44 3 3 3 3 3 3 3 3

♩=168

49 3 7 [52-58] *ff*

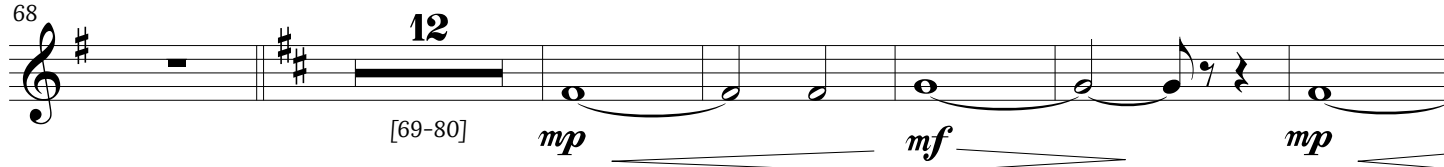
2
61

Hagerstown 2021

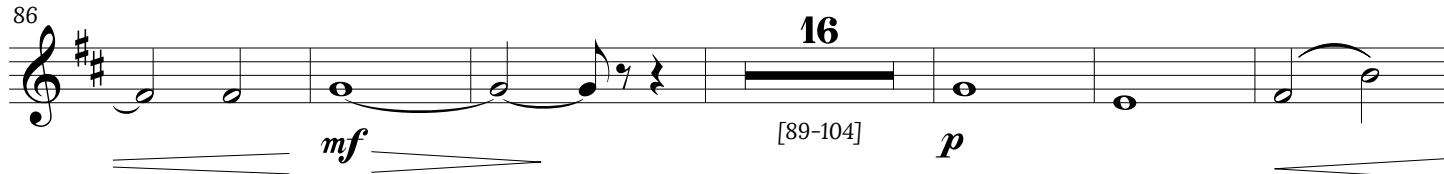
♩=136



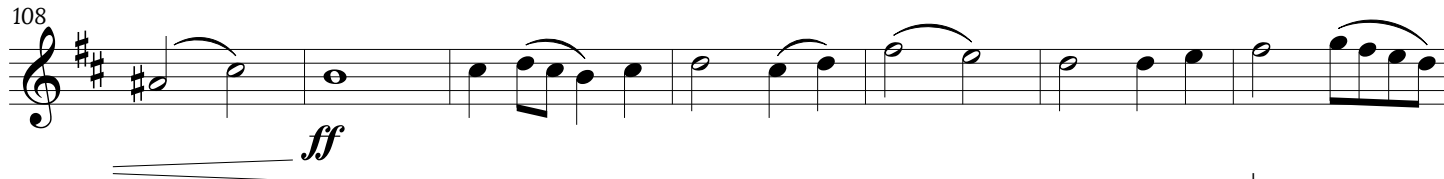
68



86



108



♩=160

115



149



166



Hagerstown 2021

3

172

173-174

ff

Detailed description: This block contains the first musical staff, spanning measures 172 to 174. Measure 172 begins with a treble clef, a key signature of one sharp (F#), and a common time signature. It contains four dotted quarter notes: F#4, G#4, A4, and B4. Measure 173 is a whole rest, with a '2' above it indicating a second ending. Measure 174 contains three eighth notes (F#4, G#4, A4) followed by a quarter rest, then another three eighth notes (B4, A4, G#4) followed by a quarter rest. The first two eighth notes of each pair are beamed together. The staff concludes with a double bar line. Dynamics include a forte (*f*) marking in measure 172 and a fortissimo (*ff*) marking in measure 174. A bracket labeled '[173-174]' is positioned below the whole rest in measure 173.

178

Detailed description: This block contains the second musical staff, spanning measures 178 to 181. Each measure consists of a beamed eighth note followed by a quarter rest. The notes are: F#4 (m178), G#4 (m179), A4 (m180), and B4 (m181). The notes in measures 179, 180, and 181 are marked with a sharp sign (>). The staff concludes with a double bar line.

182

Detailed description: This block contains the third musical staff, spanning measures 182 to 186. Measures 182, 183, 184, and 185 each contain a beamed eighth note followed by a quarter rest. The notes are: F#4 (m182), G#4 (m183), A4 (m184), and B4 (m185). The notes in measures 183, 184, and 185 are marked with a sharp sign (>). Measure 186 contains a half note F#4, followed by a quarter rest. The staff concludes with a double bar line.

187

fp

Detailed description: This block contains the fourth musical staff, spanning measures 187 to 193. Measures 187, 188, 189, and 190 each contain a beamed eighth note followed by a quarter rest. The notes are: F#4 (m187), G#4 (m188), A4 (m189), and B4 (m190). The notes in measures 188, 189, and 190 are marked with a sharp sign (>). Measures 191, 192, and 193 each contain a half note: F#4 (m191), G#4 (m192), and A4 (m193). The staff concludes with a double bar line. A dynamic marking of *fp* (fortissimo piano) is placed below the staff in measure 191. A hairpin symbol (crescendo) is located at the end of the staff.

194

ff *ffff*

Detailed description: This block contains the fifth musical staff, spanning measures 194 to 197. Measure 194 contains a half note F#4, followed by a quarter rest. Measures 195, 196, and 197 each contain a half note: G#4 (m195), A4 (m196), and B4 (m197). The staff concludes with a double bar line. Dynamic markings include *ff* (fortissimo) in measure 194 and *ffff* (fortississimo) in measure 196. Hairpin symbols (crescendo) are located at the beginning and end of the staff.